

User Guide: Desktop

Version 4.0



Contents

Contents	2
Introduction.....	3
Operation	3
Screen Descriptions	3
Logging in	3
Main menu	4
Markets	5
Individual Indices	5
- Quote.....	5
- Chart.....	5
- News	6
News.....	6
[Addition to News] - News article.....	6
Watchlist	7
Watchlist (continued)	8
FX	8
Commodities.....	9
Indices	9
Troubleshooting.....	10
Contact	10

Introduction

The 'i-mobilemarkets' product is a web based application that allows the user to view real time pricing information for the financial marketplace. The application is viewed through the browser of the device. (This manual covers the Laptop™ version of the application). Data for the application is supplied by Interactive Data™, with the news being provided by Dow Jones™ Newswires®.

As part of signing up for the application you should receive a **username** and a **password** which uniquely associates you with your account and enables management of your portfolio – if you have not received this information please contact your salesperson or contact us directly by sending an email to: sales@worldlink-global.com.



Operation

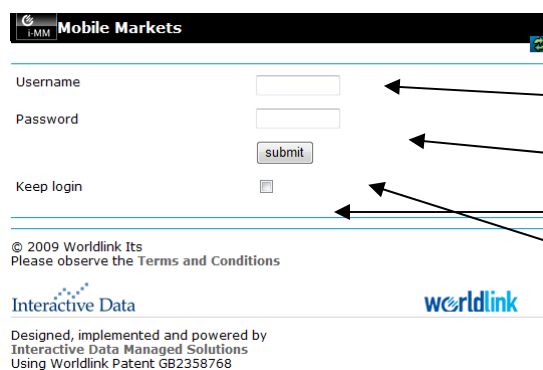
Due to the level of detail of information supplied by the application the user will need to familiarise themselves with the operation of each of the major internet browsers that are explained in this document. These are as follows:

- Internet Explorer
- Mozilla Firefox
- Apple Safari Browser
- Google Chrome

Screen Descriptions

Logging in

Firstly, locate the browser on your Laptop and enter the following into the address bar – <https://mobile.worldlink-global.com>. You will have already been provided with a username and password; if this is not the case, contact your direct salesman. If you have not received the activation email, contact our support team at support@worldlinkits.com or phone on +44 (0)870 3456 552



1. Enter your username
2. Enter your password (case sensitive)
3. Select whether you wish to keep your login
4. Press the submit button, to log in – this will then take you to the **main menu** screen

After logging in, you are asked to select a default currency for your portfolio.

Main menu

In the main menu, the screen starts with 'Markets' as the default. Here you are able to see all the Risers and Fallers of the market.

Ticking each of these sections will display information relevant to the particular title. For instance, selecting 'Stocks' will show information relevant to stocks.

By clicking on any of the following, you will be taken to a screen that displays information relevant to the name.

[Markets](#)
[News](#)
[My Watchlists](#)
[Preferences](#)
[Search](#)
[LSE](#)
[Turquoise](#)
[Plus](#)
[Markets](#)
[FX](#)
[Commodities](#)

Risers

Symbol	Name	Vol.	Bid	Ask	Price	Chg
BP.	BP	2,139,646.00	445.15	445.45	445.20 GBp	+11.10 (+2.56%)
RSA	ROYAL & SUN ALL	513,066.00	120.30	120.40	120.40 GBp	+2.60 (+2.21%)
GFS	GROUP 4 SECURIC	213,219.00	265.00	265.50	265.10 GBp	+3.80 (+1.45%)
JMAT	JOHNSON MATTHEY	21,617.00	1,533.00	1,535.00	1,533.00 GBp	+20.00 (+1.32%)
IHG	INTERCON HTL	72,780.00	1,109.00	1,110.00	1,109.00 GBp	+13.00 (+1.19%)

Fallers

Symbol	Name	Vol.	Bid	Ask	Price	Chg
FXPO	FERREXPO PLC	140,404.00	244.80	245.00	245.10 GBp	-6.20 (-2.47%)
ETI	ENTERPRISE INNS	56,340.00	102.10	103.30	103.10 GBp	-2.20 (-2.09%)
KGF	KINGFISHER	373,320.00	217.90	218.30	218.40 GBp	-3.30 (-1.49%)
HMSO	HAMMERSON	114,047.00	356.10	356.70	356.20 GBp	-5.30 (-1.47%)
EXPN	EXPERIAN	46,603.00	614.00	615.50	614.00 GBp	-8.50 (-1.37%)

Most Active

Symbol	Name	Vol.	Bid	Ask	Price	Chg
LLOY	LLOYDS BANKING	4,313,947.00	55.12	55.21	55.15 GBp	-0.22 (-0.40%)
BP.	BP	2,139,646.00	445.15	445.45	445.20 GBp	+11.10 (+2.56%)

Allows you to do a specific search

This area displays the Indices attributes. These are the Symbol, Name, Volume, Bidding Price, Asking price, overall Price and Change in value

Continuing down the page are the 'Fallers' and 'Most Active' and 'Breaking News' sections. These continue displaying the same information as above. Simply scroll down the page to reach this information.

Most Active

Symbol	Name	Vol.	Bid	Ask	Price	Chg
LLOY	LLOYDS BANKING	3,269,548.00	104.41	104.53	104.45	-0.97 (-0.92%)
RBS	ROYAL BANK OF S	3,168,919.00	54.95	55.10	55.10	-0.60 (-1.08%)
BARC	BARCLAYS	2,166,030.00	366.15	366.50	366.25	-6.45 (-1.73%)
BT.A	BT GROUP	1,599,980.00	130.40	130.55	130.35	+1.00 (+0.77%)
BP.	BP	1,474,932.00	541.60	541.85	541.95	-3.10 (-0.57%)

Breaking News

- Intel Gives More Responsibility To Trio; Gen Counsel Leaves
- Sanmina Selects Eulau As Chief Financial Officer
- STREET MOVES: CL King Names White As Invest-Banking Chief
- Tenet Healthcare Raises 2009 Earnings View Again
- Abbott Gets Chinese Clearance For Xience V Stent

Symbol Displays the abbreviation of the specific Equity. For instance, Kingfisher has the symbol 'KGR'.

Risers						
Symbol Name	Vol.	Bid	Ask	Price	Chg	
MKS MARKS & SPENCER	424,625.00	374.00	374.30	374.20	+10.30	(+2.83%)
COB COBHAM	207,129.00	212.30	212.40	212.40	+4.90	(+2.36%)
BA. BAE SYSTEMS	444,047.00	330.50	330.70	330.60	+6.70	(+2.02%)
GSK GLAXOSMITHKLINE	625,309.00	1,188.50	1,189.50	1,189.00	+8.50	(+0.72%)
SSE SCOTTISH & SOUT	238,710.00	1,160.00	1,161.00	1,160.00	+9.00	(+0.78%)

Fallers						
Symbol Name	Vol.	Bid	Ask	Price	Chg	
ETI ENTERPRISE INNS	337,710.00	162.90	163.20	162.90	-8.70	(-5.07%)
ENRC EURSN NAT RES	30,306.00	833.50	840.00	841.50	-26.00	(-3.00%)
FXPO FERREXPO PLC	10,719.00	145.90	148.50	146.00	-4.50	(-2.99%)

By clicking on one of the many **Names**, you will be able to access more information about that specific equity.

On all changing screens - if a value is highlighted **red** this indicates a negative change to the instrument; a **blue** highlight indicates where an instrument change is positive. This will appear in the 'CHG%' area. Each Equity features a Price, Change and Vol% description

Individual Indices

When clicking on specific indices, it is possible to retrieve many different forms of information on it; these forms include **Quote**, **Chart** and **News**. These are all located at the top of the screen.

- Quote

Quote | Chart | News
Add to Watchlist

MARKS & SPENCER...
374.00 +10.10 (+2.73%)

Price	374.00
Change	+10.10
% Change	+2.73
Last Update	14/09/2009 14:46:39
Bid	373.80
Offer	374.00
Open	368.4
Market Cap.	
Close	363.9
Volume	425,258
Day High/Low	374.4 / 367.7

Internet | Protected Mode: On | 100%

Within the **quote** section, it is possible to view all information within the specific item.

- Chart

Within the chart section, it is possible to aesthetically view the actions of the particular item either in 1 day format, 5 days, 1 month, 3 months, 1 year and 5 years. These are all possible by selecting the relevant option above the chart.



- News

The news section displays topical information relevant to the specific item.

Quote | Chart | News
 + Add to Watchlist

KAZAKHMYS ORD...
995.00 (6.03%)

News

- 01/29/2009 **2nd UPDATE: Kazakhmys Suspends Operations, Forecasts Lower Output**
- 01/29/2009 **UPDATE: Kazakhmys FY08 Output Flat On Year, Suspends Three Operations**
- 01/29/2009 **Kazakhmys: Annual Copper Output Ahead Of Views**
- 01/29/2009 **Kazakhmys FY08 Output Flat On Year, Closes Three Mines**
- 01/21/2009 **Kazakhmys: Chairman, CEO Pledge 9% Of Co Shares To Support Loans**
- 01/14/2009 **Kazakh Government To Set Up Co To Manage ENRC, Kazakhmys Stakes**

Within the news section, each particular section of news is expandable by clicking on the relevant item of news.



2nd UPDATE: Kazakhmys Suspends Operations, Forecasts Lower Output 01/29/2009 10:11

(Adds company, analyst comments.) By Devon Maylie Of DOW JONES NEWSWIRES
 LONDON - (Dow Jones)- London-listed Kazakhmys PLC (KAZ.LN), Kazakhstan's biggest copper producer, Thursday reported a roughly unchanged copper cathode production for 2008 on the year but expects 2009 output to decline by between 10% and 15% due to company cost-cutting efforts amid falling metal prices.



News

News

- 14:58:00: 09/13/2008 **Italy Fin Min:EU Should Use State Investment To Boost Growth**
- 15:07:00: 09/13/2008 **UPDATE: Nigeria Militants Say Army Attacking Their Positions**
- 15:16:00: 09/13/2008 **ECOFIN: Inflation Tops Concerns, Despite Slowing Growth**
- 15:21:42: 09/13/2008 **UPDATE: Three Killed In Blasts In New Delhi - Reports**
- 15:41:00: 09/13/2008 **Islamic Group Claims Responsibility For Delhi Blasts: Report**
- 15:42:00: 09/13/2008 **UPDATE: ECOFIN: Weber Sees "Pockets" Of Second Round Effects**
- 15:51:00: 09/13/2008 **Thai Government May Lift Bangkok Emergency Sunday - Sources**
- 15:55:00: 09/13/2008 **UPDATE: ECB Papademos:Expect Gradual Recovery Of Euro Area Econ In '09**
- 16:06:00: 09/13/2008 **ECOFIN: EU Policymakers Worried About Shaky Financial Mkts**

News screen, this screen highlights all current news items as supplied by Dow Jones® Newswires™. Clicking on a news item will take you to the *News Article* screen

[Addition to News] - News article

Takes you back to the *news*

< Back

Italy Fin Min:EU Should Use State Investment To Boost Growth 09/13/2008 14:58

NICE, France (Dow Jonse)--The European Union should use public money to revive economic growth, Italian Finance Minister Giulio Tremonti said Saturday.

Tremonti was speaking to reporters after a meeting of finance ministers and central bankers from the European Union.

"We can pull ourselves out of the slowdown with public demand, boosted by public investment," Tremonti said at a press conference. "We need infrastructure in Europe."

Tremonti said Italy supports an expansion of the role of the European Investment Bank and its coordination with national institutions, including the

News Article screen, this screen shows the detail of the news item selected by the News page



and commodities. Visible now
already been setup.

Watchlist Name
displays the title of the
particular portfolio

[Markets](#) [News](#) [My Watchlists](#) [Preferences](#)

Watchlist Overview

Watchlist Name	Watchlist Value	Base Currency
barclays	0.00	EUR
Chris	692.55	EUR
FT	0.00	EUR
LSE	0.00	EUR

Watchlist Value
displays the total value of
all items within the
specific portfolio.

In order to create, edit or delete your Watchlists please click the "Edit" button. After you have made your changes click "Save".

Edit allows you to edit
each individual
watchlist, delete a
specific watchlist,
rename and create a
watchlist

[Markets](#) [News](#) [My Watchlists](#) [Preferences](#)

© 2009 Worldlink Its
Please observe the Terms and Conditions

s is the Edit section of the Watchlist

Delete allows you to
permanently remove
the specific watchlist.
**NOTE: THIS CANNOT
BE UNDONE**

Maintain Watchlists

Portfolio Name	Portfolio Value	Base Currency	Delete
<input type="text" value="barclays"/>	0.00	EUR	<input type="checkbox"/>
<input type="text" value="Chris"/>	671.49	EUR	<input type="checkbox"/>
<input type="text" value="FT"/>	0.00	EUR	<input type="checkbox"/>
<input type="text" value="LSE"/>	0.00	EUR	<input type="checkbox"/>

Create
Portfolio

In order to create, edit or delete your Portfolios please click the "Edit" button. After you have made your changes click "Save".

Create Portfolio allows
you to create a new
portfolio. Enter a
name into the space
provided and select
'Save'.



Watchlist (continued)

n 'Add to

Quote | Chart | News
Add to Watchlist

MARKS & SPENCER...
374.00 +10.10 (+2.73%)

Price	374.00
Change	+10.10
% Change	+2.73
Last Update	14/09/2009 14:46:39
Bid	373.80
Offer	374.00
Open	368.4
Market Cap.	
Close	363.9
Volume	425,258
Day High/Low	374.4 / 367.7

Internet | Protected Mode: On 100%

You will then be taken to the following screen

Alternatively, you are able to add a new watchlist and place the item within this.

Add to Watchlist

Please select a watchlist from the drop down box below to add to.

barclays

Add to new Watchlist

Here you are able to change which **Watchlist** you wish to place the particular equity/commodity/exchange in. This will be able to be viewed in your **Watchlist**

the

NB: The information displayed within the Watchlist will NOT change unless the page is refreshed.



FX

Foreign Exchange features lists all the popular current exchanges and their values.

Name	Bid	Ask	Chg
GBPUSD	1.6594	1.6598	-0.01 (-0.52%)
USDJPY	90.7200	90.7600	+0.36 (+0.40%)
GBPEUR	1.1342	1.1350	-0.01 (-0.69%)
EURUSD	1.4626	1.4628	-0.00 (-0.19%)
USDNOK	5.9175	5.9235	0.00 (+0.06%)
USDHKD	7.7499	7.7504	0.00 (0.00%)
GBPCHF	1.7166	1.7169	-0.01 (-0.69%)
EURCHF	1.5130	1.5134	+0.00 (+0.01%)
GBPNZD	2.3665	2.3691	+0.00 (+0.14%)

Markets News My Watchlists Preferences
Indices Equities FX Commodities

Clicking on the relevant exchange will take you to a separate screen that shows all key information with regards to it. This is shown below

Quote | Chart | News
Add to Watchlist

GBP/USD SPOT...
1.6356 (+0.53%)

Price	1.6356
Change	+0.01
% Change	+0.53
Last Update	28-08-09/13:55:14
Bid	1.6356

With each FX, there is a BID, ASK and Change %



Commodities

The Commodities feature lists all the popular commodities and their values.

Fetching number :

Name	Bid	Ask	Chg
Gold	1,001.92	1,002.32	-2.93 (-0.29%)
Silver	16.61	16.66	-0.13 (-0.78%)
Platinum	1,311.50	1,321.50	-4.00 (-0.30%)
Palladium	290.00	296.00	+0.00 (+0.00%)
Brent	67.75	67.80	+0.12 (+0.18%)
WTI	68.71	68.72	-0.56 (-0.84%)
Dubai Light	66.45	66.50	-3.21 (-4.61%)

[Markets](#) [News](#) [My Watchlists](#) [Preferences](#)
[Indices](#) [Equities](#) [FX](#) [Commodities](#)

© 2009 Worldlink Its

By selecting a particular Commodity, you will be taken to another screen which displays relevant information, this is shown below

ADD TO WATCHLIST

SPOT SILVER...
15.56 (-0.06%)

Price	15.56
Change	-0.01
% Change	-0.06
Last Update	02-06-09

Each commodity features a BID, ASK and Change description visible.



Indices

The indices function displays all major indices.

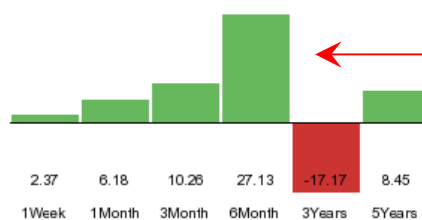
Symbol	Name	Last	Chg
UKX	FTSE 100	4996.12	-15.35 (-0.31%)
MCX	FTSE 250	9103.93	-103.96 (-1.13%)
NMX	FTSE 350	2624.87	-10.80 (-0.41%)
TASX	TechMARK	1445.94	-2.59 (-0.18%)
T1X	TechMARK 100	1568.79	-8.54 (-0.54%)
AIM5	AIM 50	2578.96	-16.98 (-0.65%)
AIM1	AIM 100	2757.84	-20.51 (-0.74%)

FTSE 350 Sectors

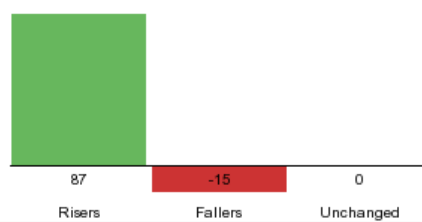
[Markets](#) [News](#) [My Watchlists](#) [Preferences](#)
[Indices](#) [Equities](#) [FX](#) [Commodities](#)

This area displays the Symbol and full name of each indices displayed. There is also a display of the last checked indices amount and the percentage of change. When you click on one of the indices, the following is show below

Performance Chart



Top/Flop Chart



Quote | Chart | Constituents | Top/Flop

ADD TO WATCHLIST

FTSE 100 INDEX...
4,942.71 (+1.51%)

ast	4,942.71
hange	+73.36
% Change	+1.51
ast Update	28-08-09/15:36:15
pen	4893.68
lose	4869.35
ay High/Low	4943.15 / 4891.3
ear High/Low	5649.1 / 3460.71

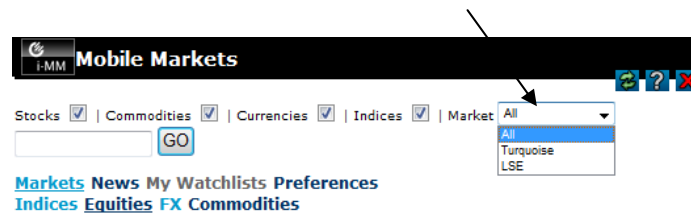
Trading Range

ng with chart and graph information, displaying information over an extended period of time

Troubleshooting

Changing Markets

On the home screen (also known as 'Markets') there is a function that allows you to follow either LSE or Turquoise or both. This is designed to refine your search further.



Unable to connect to the internet

If you are unable to connect to the internet, contact your server administrator or your ISP.

Data is not refreshing

If your data is not refreshing, this could be because your browser does not have JavaScript enabled. Depending on your browser, the method in which this is resolved is shown below:

- *Internet Explorer*
Tools >> Internet Options >> Internet zone >> Default your **internet security** level
- *Mozilla Firefox*
On the **Tools** menu, click **Options** >> On the **Content** tab, click to select the **Enable JavaScript** check box >> Click the **Go back one page** button to return to the previous page, and then click the **Reload current page** button to run scripts.
- *Apple Safari*
Edit >> Preferences >> Enable JavaScript

Contact

If you are experiencing any further problems, then feel free to contact our support team on the following information: (Note, have your account number ready for this process)

+44 (0) 870 345 665 (Toll)

+44 (0) 207 953 7372 (Toll Free)

support@worldlinkits.com

sales@worldlinktis.com